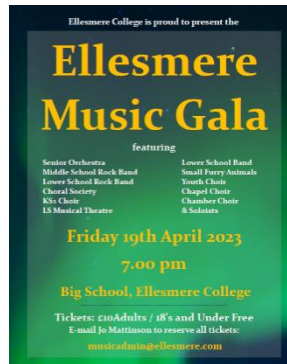




Mr A Coupe
Director of Music
Email: tony.coupe@ellesmere.com

20th March 2024

Dear Parent,



Ellesmere
A 7-18 Coeducational School

I am delighted to let you know about the fantastic Ellesmere Music Gala Concert that will take place on Friday 19th April at 7.00pm. Although this seems like a way off, the performance occurs at the end of the first week back in the Summer Term. The concert is a showcase and celebration of everything that we do in the Music Department as we head towards the end of what has been a brilliant and busy year. It is also a chance for us to mark the contributions that our Year 13 musicians have made as they move on to the next exciting chapter of their lives.

As always, you can expect a joyous, celebratory evening made up of fabulous performances by our fearless students. I would like to extend a warm invitation to parents, family, friends and members of the Ellesmere community. Tickets are £10 Adults / Free for 18 years and under.

If you would like to attend, could I ask you to please do the following:

1. Complete the audience reply slip or the performer reply slip (depending on whether your son/daughter is performing) and email it to Jo Mattinson music.admin@ellesmere.com.
2. Make a note of the date and timings please. The concert will start at 7.00pm and should finish at about 9.15pm.
3. Mark on the return slip how many tickets you will need. You can then pay for the tickets on the door.
4. Have an unforgettable evening on 19th April.

NOTE FOR PARENTS OF PERFORMERS

If your son/daughter takes part in one of choral or instrumental ensembles, they will need to rehearse on 19th April between the end of school and the concert. I have arranged dinner for them in College so that they are able to stay and they will be supervised. Students in Lower School should wear their uniform and students in Senior School should wear their suits.

Best wishes,

Ellesmere College, Ellesmere, Shropshire SY12 9AB

Tel: 01691 622321 Fax: 01691 623286

www.ellesmere.com

A Woodard School

Registered Charity number 1103049

Ellesmere College Ltd is a company, registered in England, no: 5066406



Ellesmere Music Gala Friday 19th April

AUDIENCE REPLY SLIP

Please return completed slips as soon as possible to Jo Mattinson: music.admin@ellesmere.com

My name is: _____ and I would like to reserve _____ adult tickets @£10 each and _____ children's tickets (free) for the Ellesmere Music Gala at 7.00pm on Friday 19th April – I will pay for these on the night of the concert.

The concert should end at about 9.15pm

Signed: _____

PERFORMER REPLY SLIP

Please return completed slips as soon as possible to Jo Mattinson: music.admin@ellesmere.com

My son/daughter _____ Tutor Group: _____ will be able to perform in the Ellesmere Music Gala in Big School on Friday 19th April at 7.00pm.

Please could you reserve _____ adult tickets @£10 each and _____ children's tickets (free) – I will pay for these on the night of the concert.

I understand that my son/daughter will need to remain in school for rehearsals and dinner prior to the concert.

I understand that my son/daughter will need to wear their uniform/suit into college ready for the concert as it is a non-uniform day.

The concert should end at about 9.15pm – it is important that students are present for the whole concert to support each other as performers.

Signed: _____

Ellesmere College, Ellesmere, Shropshire SY12 9AB

Tel: 01691 622321 Fax: 01691 623286

www.ellesmere.com

A Woodard School

Registered Charity number 1103049

Ellesmere College Ltd is a company, registered in England, no: 5066406